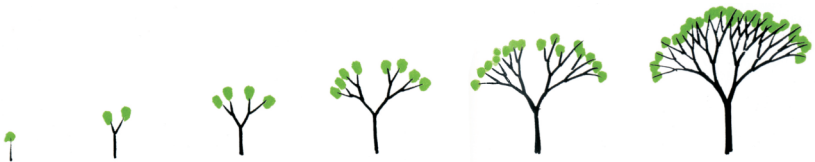


unit g manual



Cover Image
Bruno Munari, Drawing a Tree
Edizioni Corraini Publishers, 1978

Foreword

Consider this a small user manual containing basic information that will be useful for your studies. To be able to find the appropriate material or information suitable for the job is part of your architectural education.

A list of general suppliers gives you a starting point for your research and includes a series of sources where to purchase different materials.

This manual also contains other useful information that unit g considers essential, such as libraries, bookshops and shops that we believe as a student you should be introduced to. We also include a few principles that will help you to survey and observe places, including the equipment you will need.

Index

Art Materials	06
Photography & Reprography	07
Timber	08
Metal	09
Plating & Casting	10
Glass	11
Plastics	12
Miscellaneous	13
Libraries & bookshops	15
How to Survey	16
Bibliography	19
Appendix - Camino de Santiago	19

Suppliers of Materials & Tools

ART MATERIALS

Atlantis European Ltd

(art materials)
7-9 Plumber's Road
London E1 1EQ
020 7377 8855
www.atlantisart.co.uk

Paintworks ltd

(Good range of papers & card)
99-101 Kingsland Road
London E2 8AG
020 7729 7451
www.paintworks.biz

London Graphic Centre

(Graphics and arts materials)
Covent Garden Flagship Store
16-18 Shelton Street,
Covent Garden,
London WC2H 9JL
020 7759 4500
www.londongraphics.co.uk

Suppliers of Materials & Tools

PHOTOGRAPHY

Calumetphoto

(photographic equipment)
93-103 Drummond Street,
London NW1 2HJ
020 7380 1144

175 Wardour Street,
London W1F 8WU
020 7434 1848
www.calumetphoto.co.uk

REPROGRAPHY

Online Reprographics

(printing & photocopying)
75 Maltings Place
169 Tower Bridge Road
London SE1 3LJ
020 7407 3500

116 Business Design Centre
52 Upper Street
Islington
London N1 0QH
020 7288 6288
www.onlinerepro.co.uk

Suppliers of Materials & Tools

WOOD AND TIMBER

Richard russel ltd.

(plywood and sheet materials)
Unit 11
Beddington trading estate
Bath house road
Croydon
CR0 4TT
020 8684 7575

Worldwide wood co. Ltd.

(flexibly and hardwoods)
154 colney hatch lane
Munswell hill
London N10 1 ER
020 8365 2155

Moss & co.

(hardwoods)
104 king street
Hammersmith
London W6 0QW
020 8748 8251

Travis perkins

(softwoods and boards)

C.f.anderson

(softwoods and boards)
36 a graham street
Islington
London N1 8JD
020 7226 1212

Acrelane timber ltd.

(softwoods and boards)
53-55 acrelane
London SW2 5TN
020 7326 1037

Wood green timber

(softwoods and boards)
289-295 high road
Wood green
London N22 8HX
020 8888 7777

South london timber co.

(softwoods)
78 druid street
Bermondsey
London SE1
020 7252 0278

Allen nicholas

(woodturning)
Unit 1
9 long street
London E2
020 7739 7193

Enfield timber co.

(hardwoods)
1-23 hertford road
Enfield
Middx EN3 5JD
020 8804 1800

Capital crispin veneer

(veneer)
Unit 12
Bow park industrial estate
Carpenters road
Stratford
London E15 2DZ
020 8525 0300

Suppliers of Materials & Tools

METAL

Parkside steel

(steel)
Unit 8
Mowlem trading estate
Leeside road
Edmonton
London N17 0QJ
020 8808 1484

C.crisps & son ltd.

(structural sections)
298-300 staines road
Bedfont
Middx
020 8890 2464

Tingley steel

(steel bar and plate)
92 brandon street
Walworth
London SE17
020 7703 6955

Rowland reinforcement

(reinforcement)
Br goods yard
Knolleys road
Streatham
London SW16 2JP
020 8677 5228

George king ltd.

(steel and non ferrous
sections)
224 tooting high street
London SW17
020 8672 8538

John smith & sons

(non ferrous metals)
42-46 tottenham road
Dalston
London N1
020 7241 2430

T.g.lynes

(copper and plumbing)
35 caledonian road
London N1
020 7837 6455

Gooding aluminium

(aluminium)
1 british wharf
Landmann way
London SE14 5RS
020 8692 2255

B.a.c.o

(aluminium)
Bingley road
Hoddesdon
Herts EN11 0DS
019 9290 4100

Suppliers of Materials & Tools

METAL PLATING AND CASTING

Pentonville plating

(chrome, nickel plating)
Queensland road
Holloway
London N7 7AG
020 7607 7646

Wimbledon plating

(chrome, nickel, bzp plating)
Dundshill road
Earlsfield
London SW8
020 8874 2167

Wandsworth foundry

(aluminium casting)
23a twilley street
London SW18
020 8870 3812

A & a foundry

(aluminium and bronze casting)
1 fawe street
London E14
020 7515 8052

Brian a. Cox

(small casting)
Clerkenwell workshops
31 clerkenwell close
London EC1
020 7253 3056

Websters foundry

(steel casting)
Rosslyn road
South acton industrial estate
London W3
020 8993 5916

Suppliers of Materials & Tools

GLASS

Plowden & thompson

(ground glass)
Dial glassworks
Stourbridge
West midlands
DY8 4YN
013 8439 3398

James hetley

(stained glass)
41 kingsland road
London E2
020 7729 5661

Caledonian glass

(glass merchant)
251-253 caledonian road
London N1 1ED
020 7837 8638

J.preedy & sons

(glass merchant)
4a ashland place
London W1
020 700 0377

Suppliers of Materials & Tools

PLASTICS

Stephen webster plastics ltd.

(sheet plastics)
Brick knoll road
Ashley road
St albans
Herts AL1 5UG
017 2786 3138

Glazer plastics

(acrylic block and sheet)
Dudden hill lane
Neasden
London NW10 1BJ
020 8327 3232

Marchmade ltd.

(perspex)
Walthamstow business centre
Unit 11 clifford road
London E17 4SX
020 8503 3399

Hamer acrylic fabrications

(perspex engineers)
238 bethnal green road
Bethnal green
London E2
020 7739 2907

Amari plastics plc

2 cumberland avenue
Park royal
London NW10 7RL
020 8961 1961
Ironmongers

Buck & ryan

Shop 4
Victoria house
Southampton row
Holborn
London WC1b 4DA
020 7430 9898

Suppliers of Materials & Tools

MISCELLANEOUS

Tiranti

(sculpture supplies, resins,
rubbers, glass)
27 warren street
London W1
020 7636 8565

4d modelshop

(modeling materials)
The arches
Lehman street
London EC1
020 7264 1288
[Http://www.modelshop.co.uk/](http://www.modelshop.co.uk/)

Hobby stores

(modeling materials)
39 parkway
Camden town
London NW1
020 7485 1818

Amber composites ltd.

(high density foam &
composites)
94 station road
Langley mill
Nottingham

James phelps

(cement, etc)
26 goodge place
London W1
020 7637 7578

Libraries & bookshops

LIBRARIES

The British Architectural Library

Collection: Comprehensive library on all aspects of architecture. Open for reference to the general public on payment of a fee (concessions available). Day tickets and subscriber membership passes available.

Royal Institute of British Architects
66 Portland Place, W1N 4AD
020 7580 5533
Public information line:
0906 302 0400 Calls charged at
50p per minute.

<http://www.architecture.com/LibraryDrawingsAndPhotographs/Drawingsandarchives/Recentacquisitions.aspx>

British Library Humanities

National reference library. The national collection of books, journals and all printed materials. Open for use of materials not readily available elsewhere. Admission by pass only requiring identification.

96 Euston Road
London Nw1 2DB
Tel: 020 7412 7676

<http://www.bl.uk/services/reading/reading.html>

Google Books

<http://books.google.com>

National Art Library

National library- the largest art and design library in the United Kingdom, with particularly strong coverage of the decorative arts. Admission is free but all readers need to register, and should be able to provide some form of identification.

Victoria and Albert Museum

Exhibition Road
London Sw7
020 7942 2400
www.vam.ac.uk/nal/index.html

BOOKSHOPS

RIBA

66 Portland Place
London
W1B 1AD
Tel :
Monday to Friday: 020 7256 7222
Saturday: 020 7580 5533

<http://www.ribabookshops.com/site/home.asp>

STANFORDS MAPS

12-14 Long Acre
Covent Garden
London WC2E 9LP
Tel: 020 7836
www.stanfords.co.uk

How to Survey

1. Survey Area

Define the survey area especially for large scale drawings it is very useful to go to site with a scaled drawing of the area of study

2. Previous Study

Study the significant architectural periods before visiting try to obtain historic information of buildings and the physical development of the place where they sit

3. Assemble materials:

A hardbacked pad (min A4 size), a cloth tape (20m long), spring steel tape (2m) long, a simple weight and cord or a plumb line, a ball of plasticine, a photographic camera and tripod, pencils, and coloured pens.

How to Survey

4. Procedure

a. prepare sketch plans, sections and elevations. These should be reasonably in proportions but should not attempt to show too much detail.

b. prepare larger scale details in plan, section and elevation, using the sketch plans as a key and cross-referencing.

c. locate the building by triangulation from some base line, e.g. the front gate.

d. always use triangulation to cross reference your dimensions in order to survey distortions or irregularities of rooms or objects

e. proceed from room to room or around the space, measuring and of rough openings, e.g. window jamb to jamb, ignoring window frames dimensions in order to survey distortions or irregularities of rooms or objects

f. take dimensions of each elevations in turn. These should be related to a horizontal datum line (e.g. top of a plinth) not the varying ground line. At upper levels dimensions may have to be taken from open windows. In the absence of long ladders or the possibility of accessing the interior of the building, dimensions of the openings, chimney stacks, etc may be estimated e.g. by counting brick or stone courses.

5. Taking & noting dimensions

An ideal way will be in teams of three, one helper should hold the fixed end of the tape, another should read off each dimension and the surveyor should book down on his pad.

Running dimensions are to be preferred whenever possible, and using a long run through doors as a check. Remember always to take as many diagonal dimensions as necessary to find out angles later on.

It will be helpful if the sketch plans, dimensions together with dimension lines and notes and cross references are drawn with different pen types.

6. Drawing

Although the measured notes should be prepared in such a way that anyone could draw them out, it is obviously preferable that the surveyor draws them, and when the memory is fresh.

Bibliography

CONSTRUCTION CONCEPTS

"Constructing Architecture. Materials, processes, structures. A handbook" by ANDREA DEPLAZES, Birkhäuser, 2006, ISBN 3764371900

ARCHITECTURAL DICTIONARIES

"The Penguin Dictionary of Architecture and Landscape Architecture", by John Fleming, Hugh Honour, Nikolaus Pevsner, Penguin, 1999, ISBN 780140513233

"The Penguin Dictionary of Building", by John S. Scott and James H. Maclean, Penguin, 1993, ISBN 9780140512397

ARCHITECTS DATA

"Metric Handbook: Planning and Design Data", by David Adler, Architectural Press, 1999
ISBN 075060899

Architects' Data, by Ernst Neufert, Peter Neufert, Bousmaha Baiche, Nicholas Walliman, published by Blackwell Science, 2002
ISBN 0632057718

"Architect's Pocket Book", by Charlotte Baden-Powell, Architectural Press, 2001, ISBN 0750647647

ENGLAND

"The Pattern of English Building", by Alec Clifton-Taylor, Jack Simmons Contributor Jack Simmons, published by Faber and Faber, 1987
ISBN 0571139884

"Vernacular Architecture. An illustrated Handbook" by R.W. BRUNSKILL. Faber & Faber (Ed.)

"The Buildings of England", by Nikolaus Pevsner, published by Penguin Books, 1966

GENERAL

"The Poetics of Gardens", by Charles W. Moore, William J. Mitchell, William Turnbull, MIT Press, 1993
ISBN 0262631539

"The Place of Houses", by MOORE, CHARLES W., Henry Holt and Company/LLC, New York, 1979, ISBN 0805010440

"Experiencing Architecture", by Steen Eiler Rasmussen, MIT Press, 1962, ISBN 0262680025

"Architecture: Form, Space, & Order", by Francis D. K. Ching, Frank Ching, published by John Wiley and Sons, 2007
ISBN 0471752169

"In praise of shadows", by Junichirō Tanizaki, Edward G. Seidensticker Translated by Edward G. Seidensticker, published by Leete's Island Books, 1977
ISBN 0918172020

Appendix
Camino de Santiago

Camino de santiago

EQUIPMENT ESSENTIALS

Shoes

The footwear is essential. It must be a boot that embraces the ankle as roads might be irregular, to avoid the twists that could result in the suspension of the march. Apart from being high, the boot should be waterproof and breathable, to avoid problems arising from the sweating of the feet, such as blisters and fungal infections. Take a pair of other softer shoes to pad around towns, villages and albergues in the evening or just to change shoe.

A pair of flip flops for the Ourense bath's and the albergue's showers is essential.

Socks

Supplement of the footwear are socks, of wool or similar, that should be changed frequently. It is suggested to bring a pair per day or walk.

Clothing

Clothing should be loose and breathable, to avoid the frequent friction that produces contact dermatitis, especially on the inside of the thighs. Bring fast-drying lightweight layers rather than bulky sweaters.

If you are going to wash clothes in the evening, pack some laundry soap and pegs to hung things out during the night.

Water proofing

Rain Gear, both to protect you and your rucksack.

Hiking rucksack

A light backpack with wrist loops and chest strap is the most comfortable option. 36 litres capacity should be enough, remember the more you carry the more subjected you are to blisters and other injuries.

Sleeping bag

A light weight sleeping bag is essential, as most albergues do not provide blankets.

Warm hat and gloves

These will be useful for the early mornings.

Torch and reflectors

A small torch can be useful both at night in the albergue and to look around churches. Reflective arm bands will be a safe option if walking along roads with reduced visibility.

Earplugs

If you are a light sleeper, as you will be sometimes sleeping with others, we recommend earplugs.

Towel

A light fast drying towel is a must.

EQUIPMENT RETAILERS

Decathlon

Canada water retail park
Surrey quays road
Se16 2xu london
Phone : 020 7394 2000
[Http://www.decathlon.co.uk/en/](http://www.decathlon.co.uk/en/)

Cotswold outdoor

Ground floor, st clements
house, leyden street
London e1 7ll
+44 0207 655 4660

Ellis Brigham

Tower house, 3/11 southampton
st., covent garden
London wc2e 7ha
+44 0207 395 1010

Sheactive Limited

21-22 new row, covent garden
London wc2n 4la
+44 0207 836 6222

Snow + rock

4 mercer street / off long
acre, covent garden
London wc2h 9qa
+44 020 7420 1444

Published by undergraduate unit g
School of architecture and the Visual Arts
University of East London

© unit g 2008

www.estarstudio.eu/unitg

...in which a man, who knew there was treasure in a place called Penabranca and not finding the hiding-place, bought an acre and a half of hillside and on the deed put Penabranca, and asked everybody if they would call that place Penabranca, and a few years went by and when Penabranca was in everybody's head and nobody called it by any other name, he went there and found the treasure. The treasure of Penabranca which he knew was in Penabranca.

Alvaro Cunheiro, treasures and other magics